

Cylinder-Integrated Collet Chuck

JAP207-42BZI

Air Collet Chuck for Hainbuch Style Collets

- Adopts Hainbuch style clamping heads.
- Built-in rotary air cylinder.
- Precision pull-back collet chuck: 0.010mm repeatability.
- Chuck is with through hole for bar parts.
- Double piston: large gripping force.
- High resistance to coolant fluid and chips penetration.



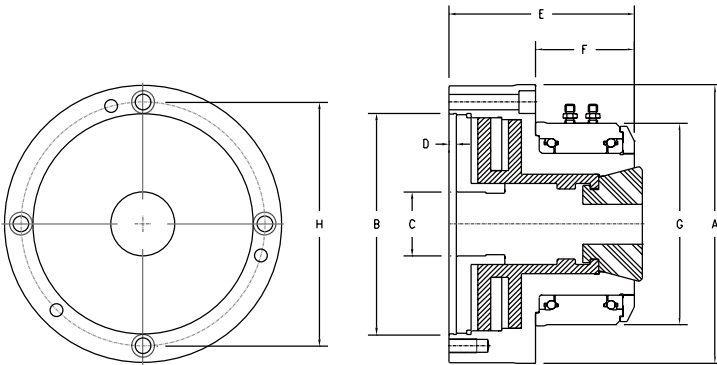
CHP206-SS42

Hydraulic Collet Chuck for Rotary Tables / Indexing Tables

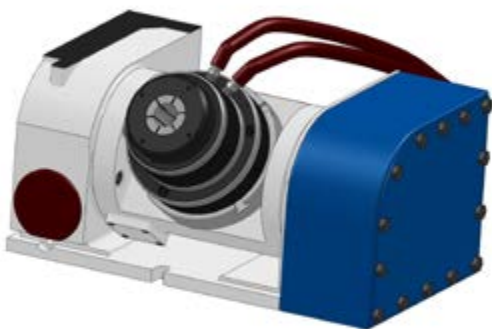
- Adopts Hainbuch style clamping heads.
- Built-in rotary hydraulic cylinder.
- Precision pull-back collet chuck: 0.010mm repeatability.
- Special for rotary tables / indexing tables.
- Real front-mounting design allows easy installation.
- Hydraulic actuated: large gripping force.



Dimension and Specification



Application



CHP206-SS42 and JAP207-42BZI can be front-mounted onto a 4-axis or 5-axis rotary table.

Model	JAP207-42BZI	CHP206-SS42
Air / Hydraulic	Air	Hydraulic
A	197 (7.75")	166 (6.54")
B	155 (6.10")	130 (5.12")
C	42 (1.65")	42 (1.65")
D	4.5 (0.18")	4.5 (0.18")
E	146 (5.75")	100 (3.94")
F	69 (2.72")	52 (2.05")
G	146 (5.75")	135(5.31")
H (P.C.D.)	172 (6.77")	147 (5.79")
Mounting Bolts	3H-M10 (Front) + 3H-M10 (Rear)	4H-M10 (Front)
Collet Model	SZM SS42	SZM SS42
Max. R.P.M.	2500	120
Operation Pressure	3-7kg/cm ² (40-100psi)	10-35kg/cm ² (143-500psi)
Max. Capacity	42mm (1.65")	42mm (1.65")
Piston Area	256cm ² (40.0in ²)	66cm ² (10.2in ²)
Gripping Force	5572kgf @7kg/cm ² (12258lbf @100psi)	5669kgf @30kg/cm ² (12472lbf @428psi)
Net Weight	20kgs (44lbs)	10kgs (22lbs)